

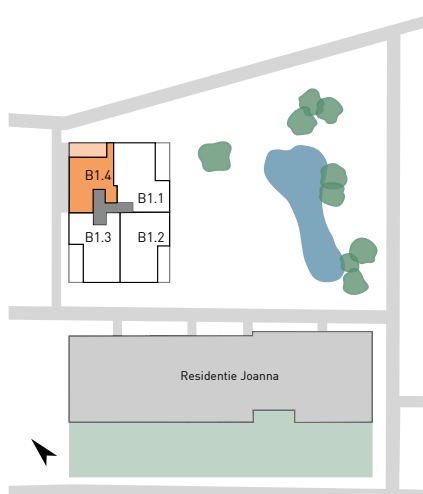
GEEL LAAR

**APP
B1.4**

APPARTEMENT EERSTE VERDIEPING MET 1 SLAAPKAMER

Oppervlakte: 76 m²

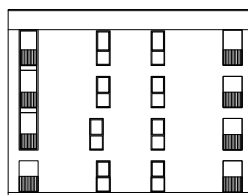
Terras: 12 m²



Gevel noord



Gevel west



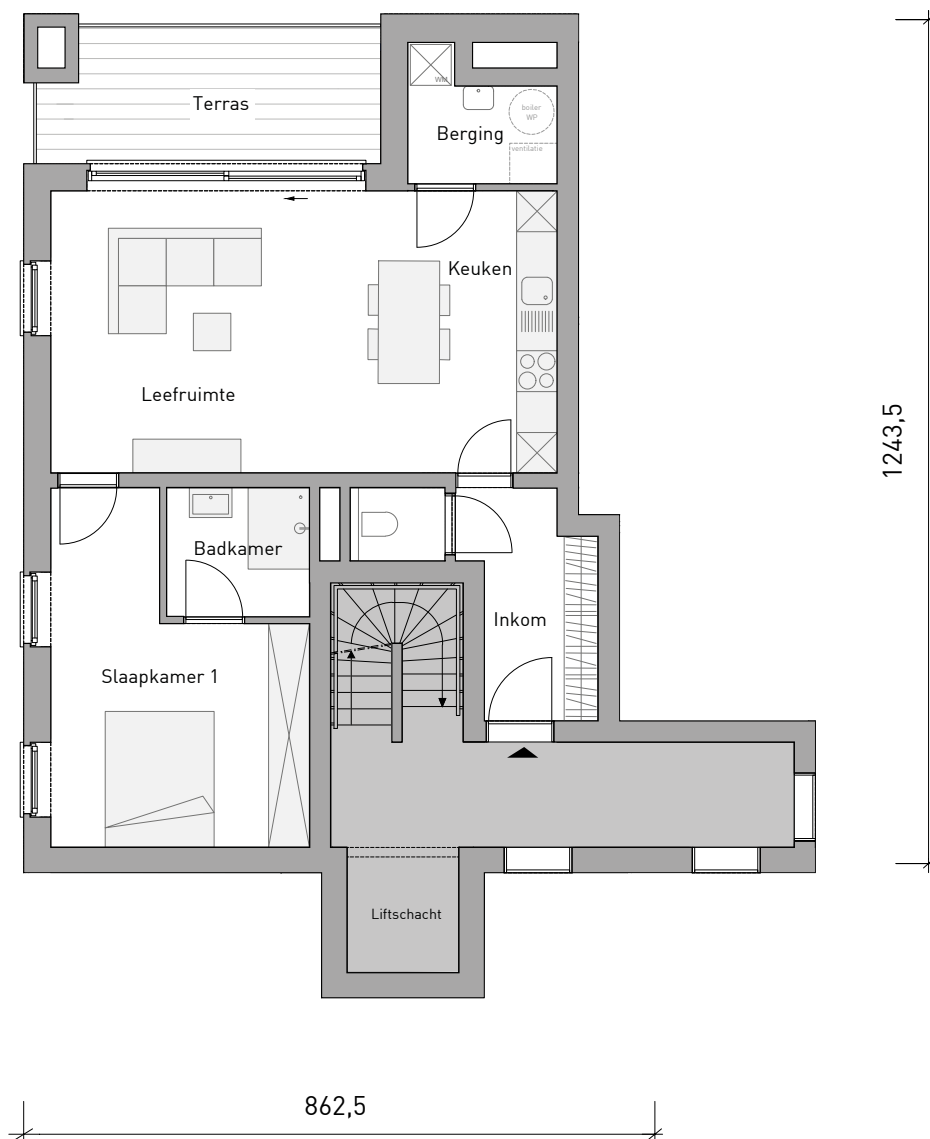
Gevel zuid



Gevel oost - parkzijde

Situering

APP B1.4



Grondplan