

**LOT  
20**

OUPEYE - AU VIVIER

## Maison 3 façades

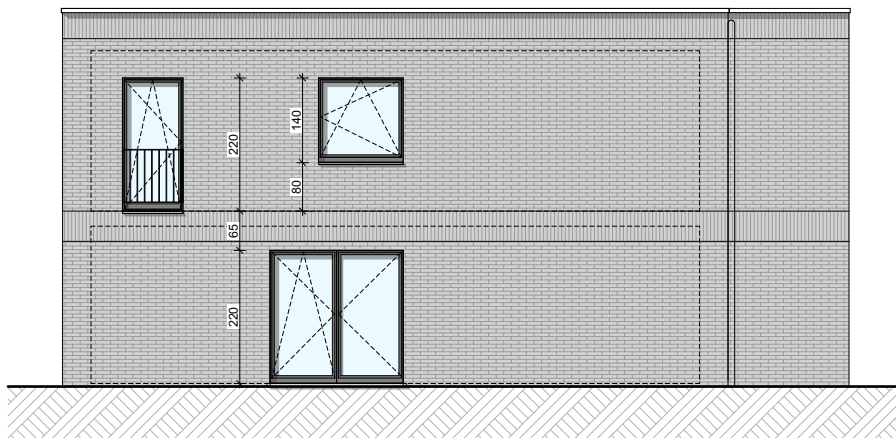
3 chambres - superficie brute :  $\pm 138 \text{ m}^2$  - terrain :  $\pm 302 \text{ m}^2$   
PEB A



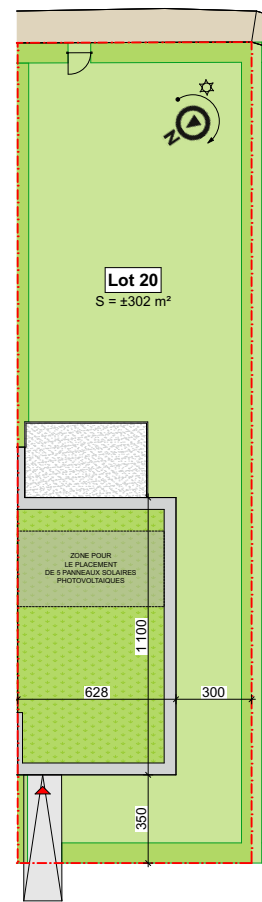
Façade avant



Façade arrière



Façade latérale droite



Parcelle

Façades

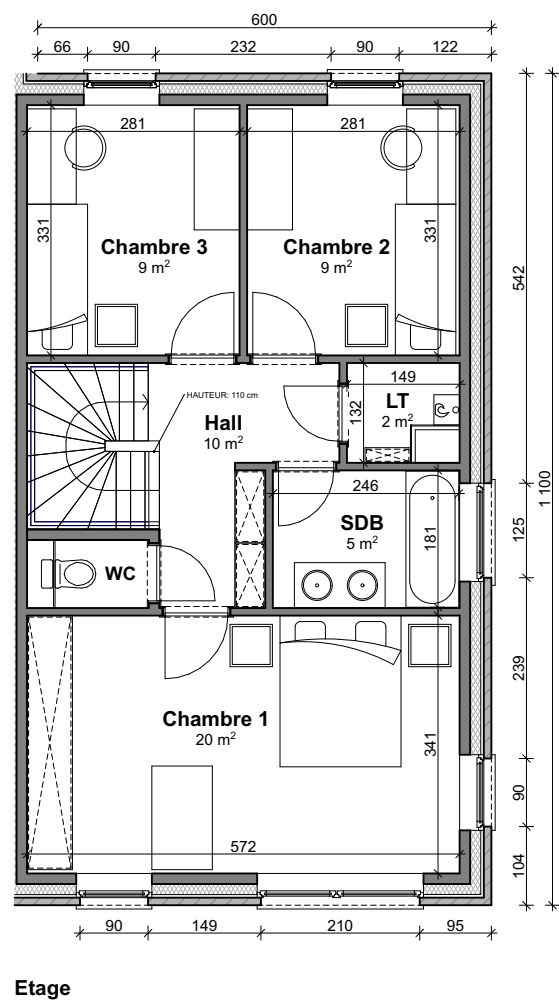
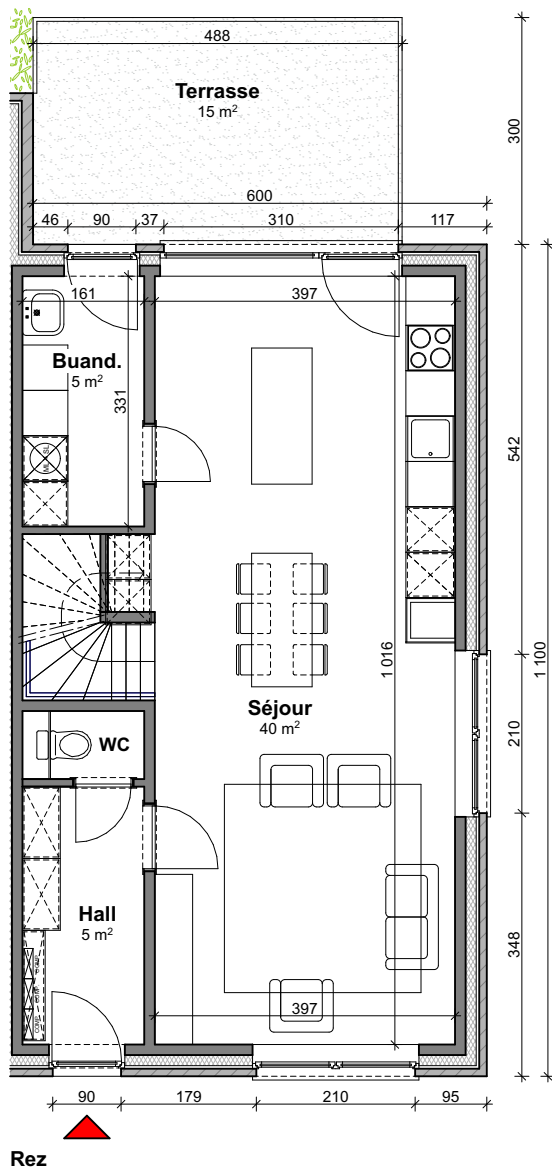
Contactez notre Sales Consultant

T +32 4 268 03 20

matexi.be - info@matexi.be



# LOT 20



Vue en plan - Rez et étage