

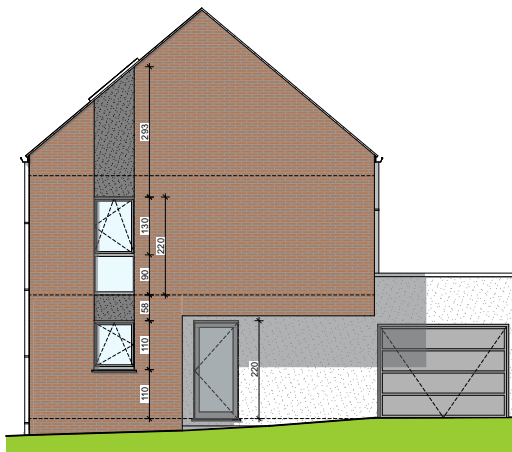
CHASTRE - RUE DES DOUVES

LOT

Maison 3 façades

O

3 chambres - superficie : ± 147 m² - Terrain : ± 972 m²



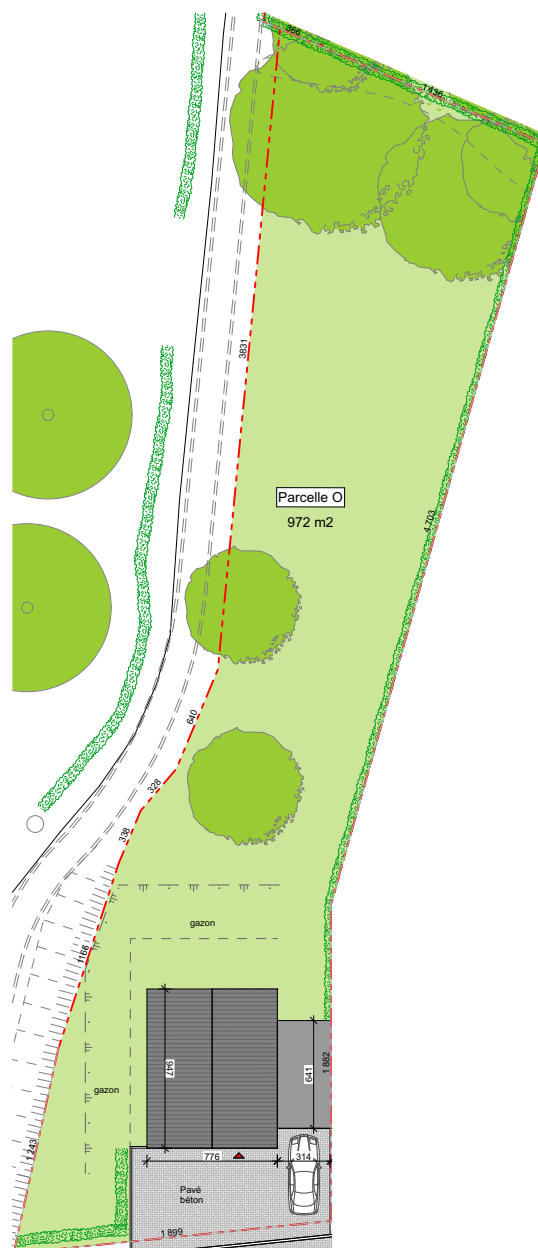
Façade avant



Façade arrière



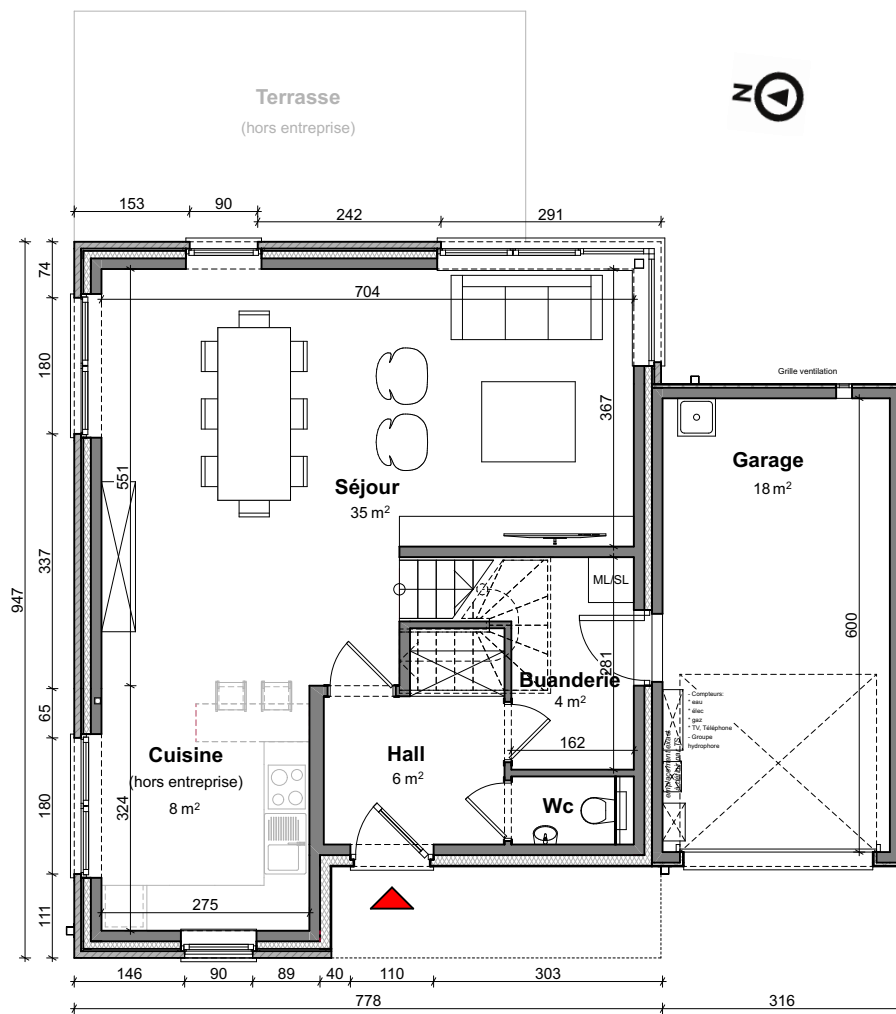
Façade latérale gauche



Parcelle

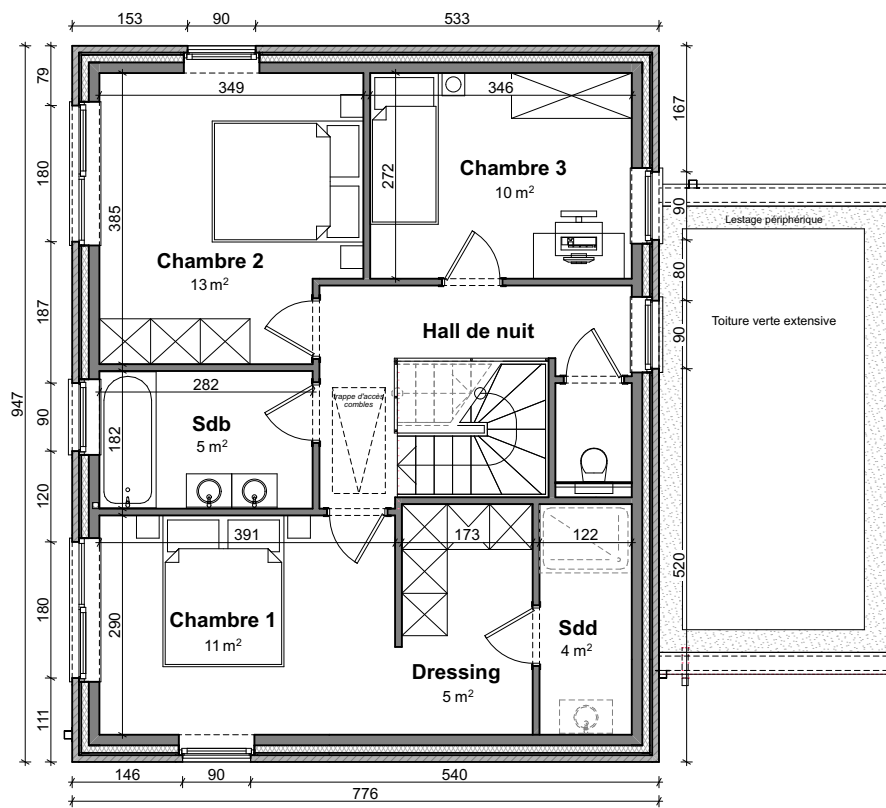
Façades

LOT
O



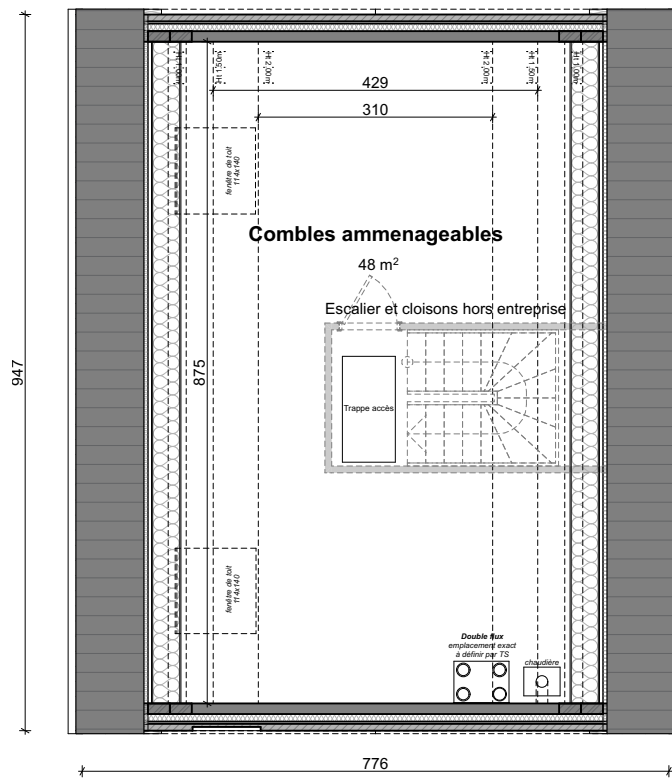
Vue en plan - Rez
Surface nette approximative : 75m²

LOT
O



Vue en plan - Etage
Surface nette approximative : 62m²

LOT
O



Vue en plan - Grenier